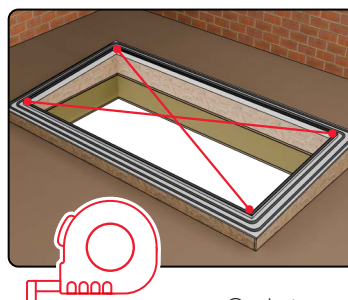


Step One

Measure the opening's length and width, ensuring they match the technical drawings' sizes.

Step Two

Unpack the rooflight and separate the lid from the upstand.

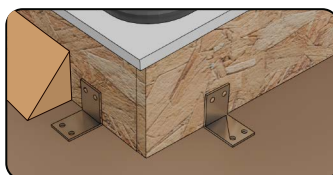


Step Three

Place your upstand over the opening and measure diagonally to ensure the upstand is square.

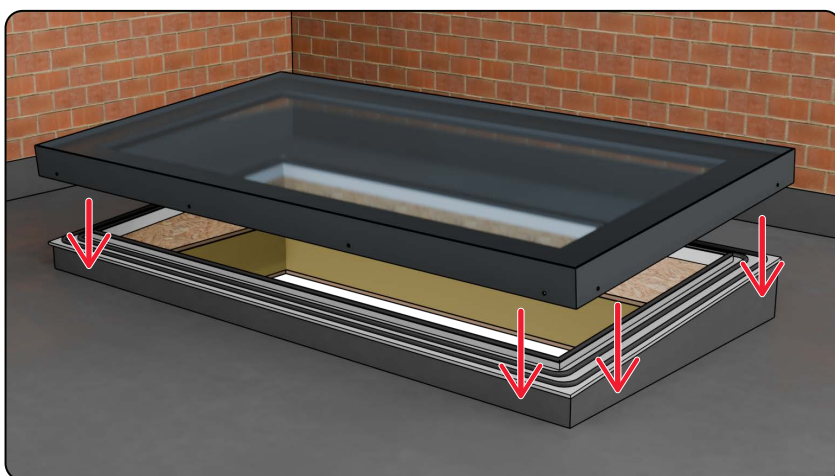
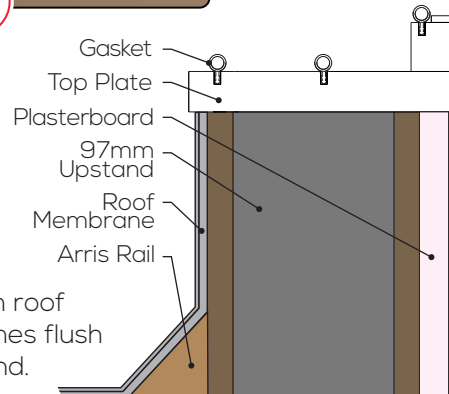
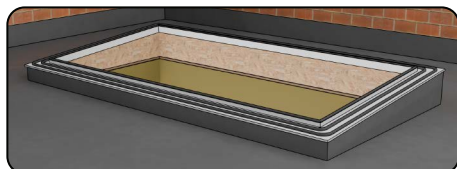
Step Four

Fix the upstand to the roof deck using either external fixing brackets or internal straps.



Step Five

Weather the upstand with your chosen roof covering, ensuring the membrane finishes flush against the protruding lip of the upstand.



Step Six

Gently place the lid onto the upstand, keeping fingers clear of the gap between the upstand and skylight frame. Ensure the rooflight sits securely on the gaskets and is centralised.



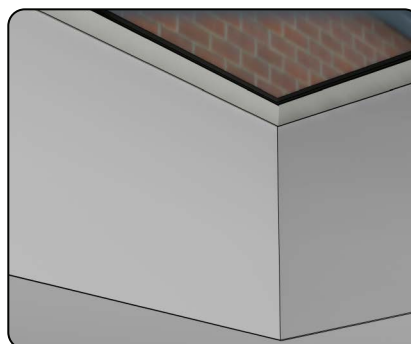
Step Seven

Using the screws provided, fix the rooflight to the upstand. Ensure the two security screws are positioned on opposite sides of the rooflight.



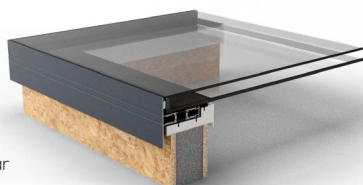
Step Eight

Internally, the plasterboard should fit under the internal stop bead, this gives you a natural stop for your plaster.



EOS-97 Fixed Rooflight

- U Value as low as 0.66 W/m²K
- 97mm insulated upstand
- Laminate security glass
- Range includes Opening and Modular



Tools Required

You will need a measuring tape, drill and Phillips bit to successfully complete install.

