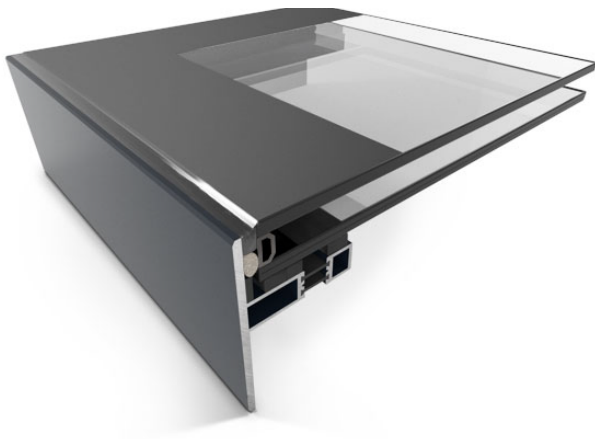


## PRODUCT DESCRIPTION

EOS Fixed rooflight maximise the amount of natural daylight without intrusive framing being visible from beneath. Our lid only rooflight has been tested for impact resistance to ensure the highest safety standards, protecting those carrying out roof maintenance and cleaning. (TN66/67)



## MATERIALS

Fixed Lid only rooflight is constructed from glass and aluminium.

## GLASS TYPE

Fixed rooflight are supplied with double glazed super low 'e' coated units with Argon filled cavities. Our standard glass specification is ;

- 31mm double glazed unit.
- 6mm toughened outer pane, 16mm argon filled cavity and 8.8mm clear laminated super Low E inner pane.

## U VALUE

U-value for the unit overall is 1.24 W/m<sup>2</sup>K.\*

## DIMENSIONS, POSSIBILITIES & LIMITATIONS

- To avoid water pooling our rooflights should be installed on roofs pitched between 5° and 30°
- To be installed on a timber upstand (by others).
- 16 stock sizes with 3-5 day delivery
- Bespoke sizes available in 2 -3 weeks

## WARRANTY

- Rooflights comes with a 10 year warranty.
- Our products conform to the most up-to-date regulations and are CE marked.
- Every EOS rooflight is impact tested as standard to TN66/67 to protect those carrying out roof maintenance and cleaning.
- Regulations as follows:  
BSEN14351-1:2006+A1:2010,  
BS 6375-1:2015,  
BS EN ISO 10077-1,  
BS EN ISO 10077-2,  
BS EN673,  
BS EN 1873,  
ISO9001:2008,  
BS EN12207:2015 / BS EN1026:2000,  
BS EN12208:2000 /BS EN 1027:2000,  
BS EN12210:2016 / BS EN12211:2000,  
DS418

## About EOS

EOS Rooflights was set up with the aim of providing high performance roof glazing direct to market.

Our extensive product range includes Fixed, Opening, Walk-On, Modular and Frameless Lanterns.

**T: 0208 462 3557 E: [hello@eosrooflights.co.uk](mailto:hello@eosrooflights.co.uk)**  
**[www.eosrooflights.co.uk](http://www.eosrooflights.co.uk)**

## EOS Lite Fixed Roof Light

Stock Sizes	To suit structural openings: stock or made to measure sizes available
Description	Fixed glass rooflight(s) for installation on flat or low pitched roofs
Standard	Manufactured to meet the requirements of EN14351-1 (European Regulation for glazing effective since 1st Feb 2010) with declaration of conformity and accompanied by a CE label to prove complete assembly watertightness, thermal transmittance, air permeability and factory production control to ISO 9001.
Installation	Designed for quick and simple installation by any roofing/main contractor. Kerb to be constructed in accordance with our drawings, top inclined within a range of 5° to 30° (fillet wedges by others). Roof membrane is then dressed around the kerb, glass top secured in position.
Impact Safety Standard	Complete unit (glass, frame and optional kerb) have been tested to CWCT TN66/67 for impact resistance to reduce the likelihood of death or injury caused by falls.
Frame Finish	External aluminium frames polyester powder coated (p.p.c.) to RAL 7016 (30% Gloss) anthracite grey.
Edge Design	Glass surface raised above frame edge to allow water runoff. Glass surface edges have silkscreen print to resist UV degradation of the double glazed unit seals.
Glazing Details	31mm Double glazed low emissivity insulating glass units, 6mm clear toughened glass outer pane with edge frit, 16mm argon filled cavity with TGI warm edge spacer, 8.8mm clear laminated float glass inner pane. Design allows for drain and ventilation behind the pane with glazing pads.
Thermal Transmittance	U-value 1.24W/m <sup>2</sup> K of complete skylight.
Water Tightness	Watertight to EN 1873.
Air Tightness	Airtight to Class 4 rating 600Pa EN/ISO12207 / EN/ISO1026 (2000).
Sound Insulation	34 (-2, -6) dB sound reduction, tested to EN/ISO717-1/A1.
Upstand Included	To be installed on a timber upstand (by others)