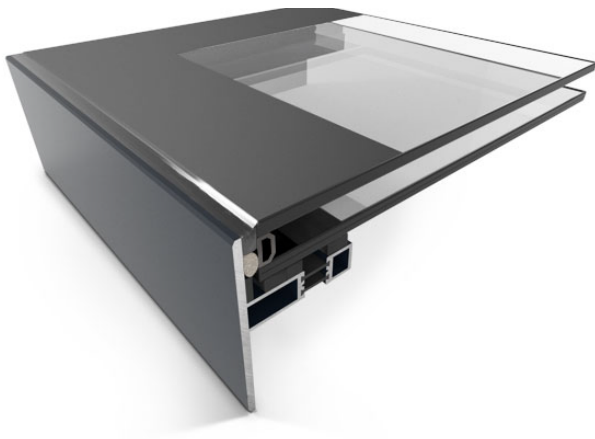


PRODUCT DESCRIPTION

EOS Fixed rooflight maximise the amount of natural daylight without intrusive framing being visible from beneath. Our lid only rooflight has been tested for impact resistance to ensure the highest safety standards, protecting those carrying out roof maintenance and cleaning. (TN66/67)



MATERIALS

Fixed Lid only rooflight is constructed from glass and aluminium.

GLASS TYPE

Fixed rooflight are supplied with double glazed super low 'e' coated units with Argon filled cavities. Our standard glass specification is ;

- 31mm double glazed unit.
- 6mm toughened outer pane, 16mm argon filled cavity and 8.8mm clear laminated super Low E inner pane.

U VALUE

U-value for the unit overall is 1.24 W/m²K.*

DIMENSIONS, POSSIBILITIES & LIMITATIONS

- To avoid water pooling our rooflights should be installed on roofs pitched between 5° and 30°
- To be installed on a timber upstand (by others).
- 16 stock sizes with 3-5 day delivery
- Bespoke sizes available in 2 -3 weeks

WARRANTY

- Rooflights comes with a 10 year warranty.
- Our products conform to the most up-to-date regulations and are CE marked.
- Every EOS rooflight is impact tested as standard to TN66/67 to protect those carrying out roof maintenance and cleaning.
- Regulations as follows:
BSEN14351-1:2006+A1:2010,
BS 6375-1:2015,
BS EN ISO 10077-1,
BS EN ISO 10077-2,
BS EN673,
BS EN 1873,
ISO9001:2008,
BS EN12207:2015 / BS EN1026:2000,
BS EN12208:2000 /BS EN 1027:2000,
BS EN12210:2016 / BS EN12211:2000,
DS418

About EOS

EOS Rooflights was set up with the aim of providing high performance roof glazing direct to market.

Our extensive product range includes Fixed, Opening, Walk-On, Modular and Frameless Lanterns.

**T: 0208 462 3557 E: hello@eosrooflights.co.uk
www.eosrooflights.co.uk**