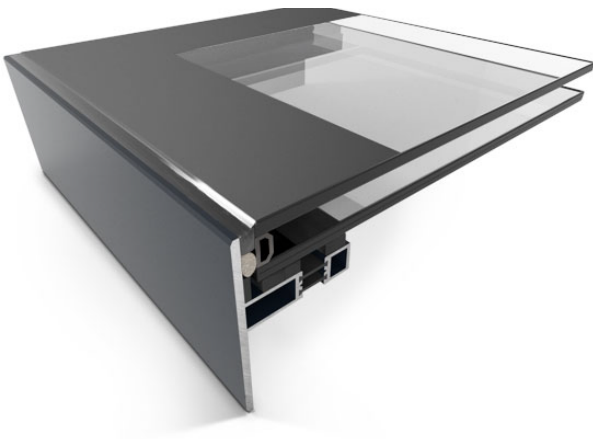


## PRODUCT DESCRIPTION

Our EOS Lite Fixed rooflight maximises the amount of natural daylight without intrusive framing being visible from beneath. EOS Lite has been tested for impact resistance to ensure the highest safety standards. Our Lite system are impact tested as standard to TN66/67 to protect those carrying out roof maintenance and cleaning.



## MATERIALS

The EOS Lite Fixed rooflight is constructed from glass and aluminium.

## GLASS TYPE

Fixed rooflight are supplied with double glazed super low 'e' coated units with Argon filled cavities. Our standard glass specification is ;

- 31mm double glazed unit.
- 6mm toughened outer pane, 16mm argon filled cavity and 8.8mm clear laminated super Low E inner pane.

## U VALUE

U-value for the unit overall is 0.97 W/m<sup>2</sup>K.\*

## DIMENSIONS, POSSIBILITIES & LIMITATIONS

- To avoid water pooling EOS rooflights should be installed on roofs pitched between 5° and 30°
- Optional 150mm or 300mm upstand coming soon.
- 16 stock sizes with 3-5 day delivery
- Bespoke sizes available

## WARRANTY

- EOS Lite comes with a 10 year warranty.
- Our products conform to the most up-to-date regulations and are CE marked.
- Every EOS Lite rooflight is impact tested as standard to TN66/67 to protect those carrying out roof maintenance and cleaning.
- Regulations as follows:  
BSEN14351-1:2006+A1:2010,  
BS 6375-1:2015,  
BS EN ISO 10077-1,  
BS EN ISO 10077-2,  
BS EN673,  
BS EN 1873,  
ISO9001:2008,  
BS EN12207:2015 / BS EN1026:2000,  
BS EN12208:2000 /BS EN 1027:2000,  
BS EN12210:2016 / BS EN12211:2000,  
DS418

## About EOS

EOS Rooflights was set up with the aim of providing high performance roof glazing direct to market.

Our extensive product range includes Fixed, Opening, Walk-On, Modular and Frameless Lanterns.

**T: 0208 462 3557 E: [info@eosrooflights.co.uk](mailto:info@eosrooflights.co.uk)  
[www.eosrooflights.co.uk](http://www.eosrooflights.co.uk)**