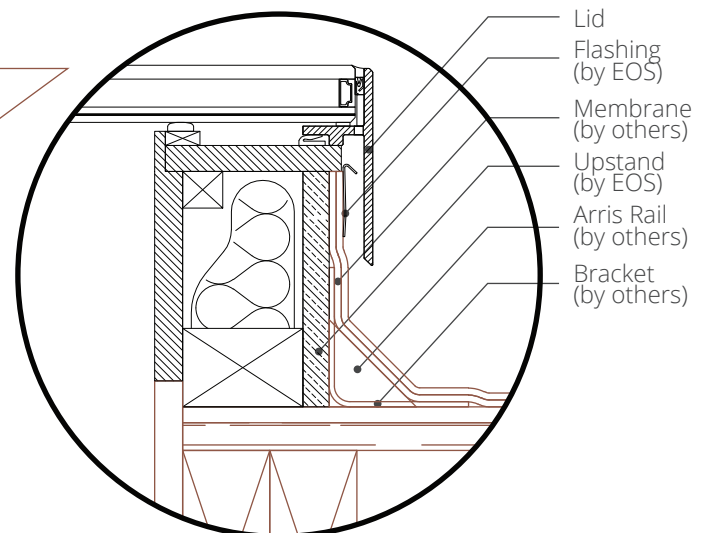
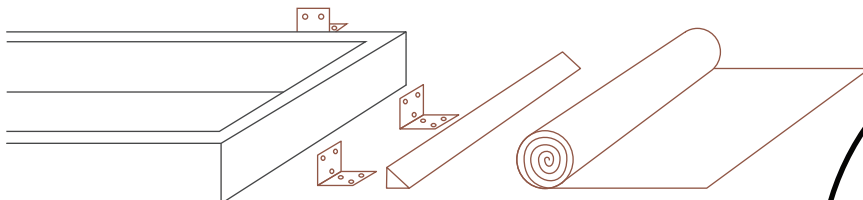
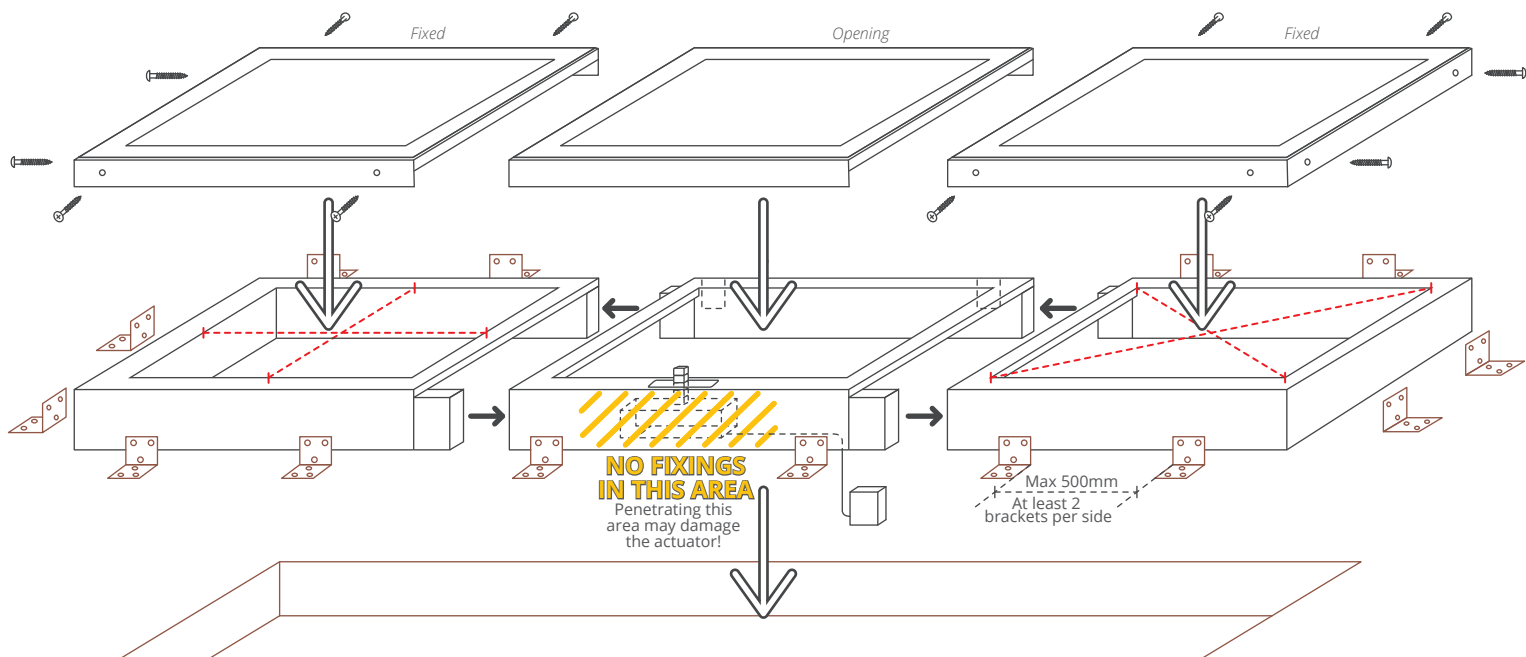


## Tools Needed

## IMPORTANT

- If the roof pitch is less than 3°, a wedge (by others) must be installed under the product. Max roof pitch is 30°.
- Make sure upstand is square before fixing.
- Do not engage the motor before connecting chain via pin to chain bracket. Rooflight may slip and may cause damage.

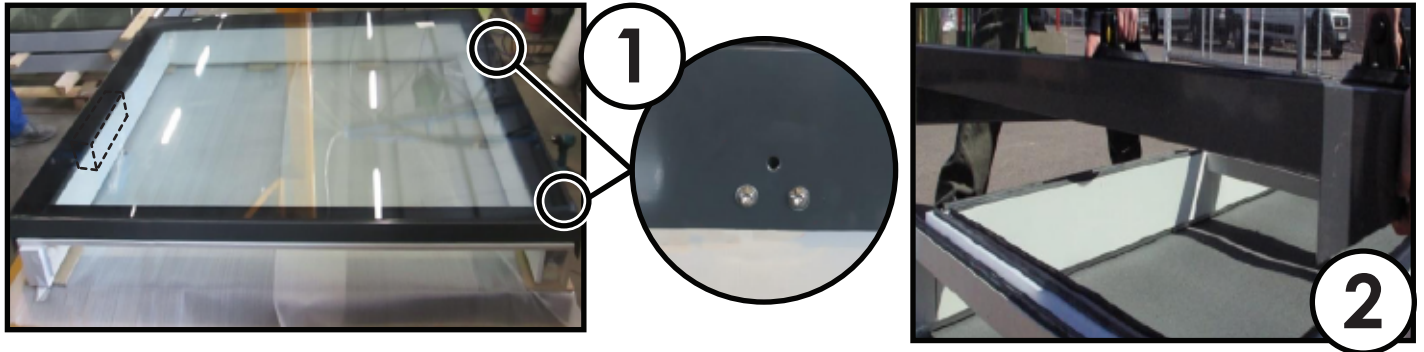


**BY EOS**

**BY OTHERS**

Brackets & Screws  
Arris Rails  
Roof Membrane  
Wedge (if pitch is below 3°)  
Upstand (if not requested)

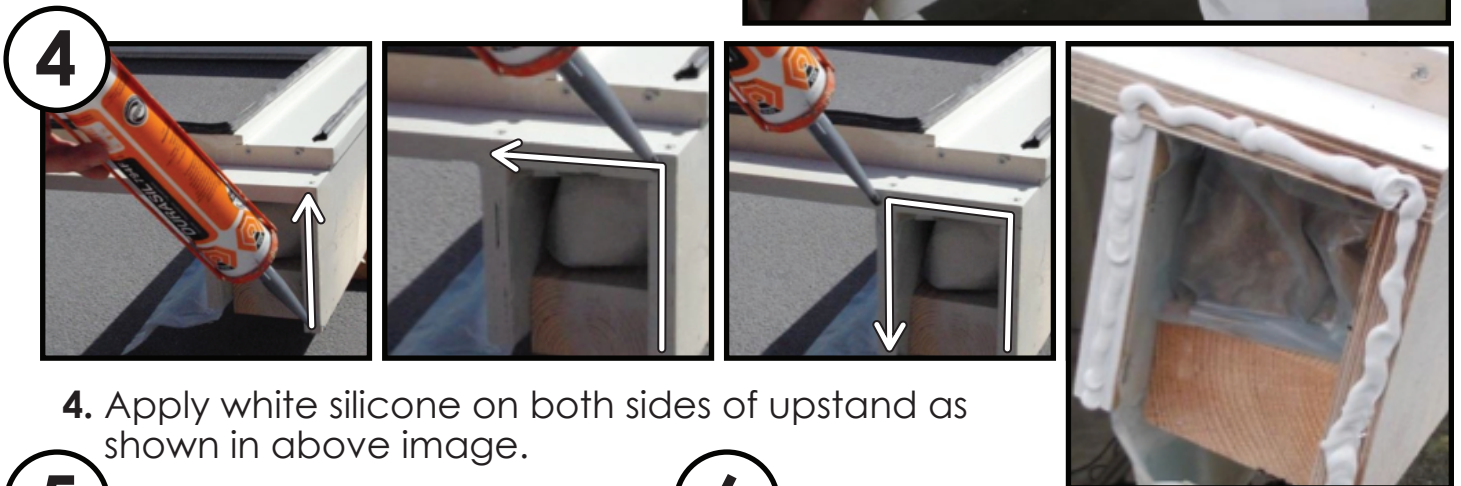
First detach rooflight from Upstand. Fixed unit is not connected and will lift off.



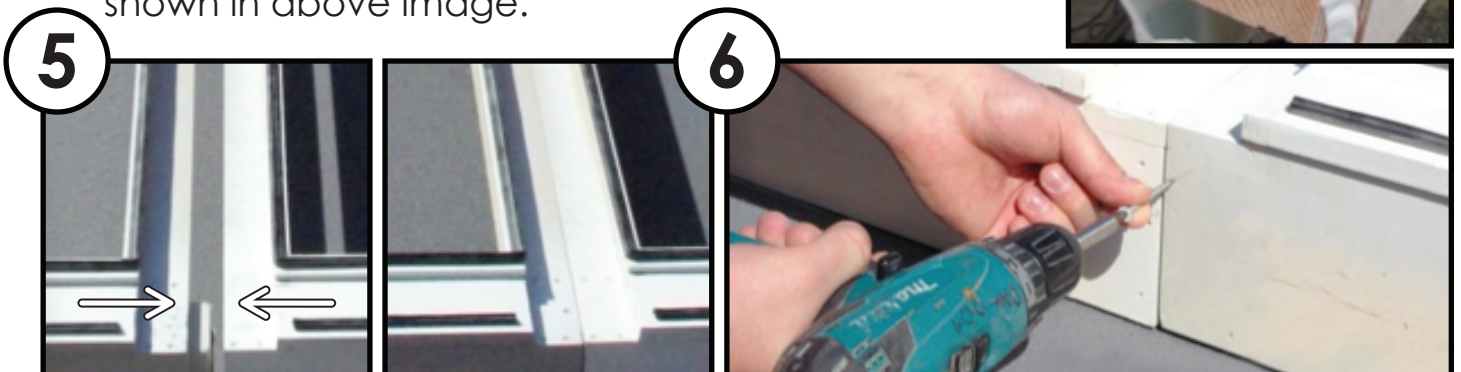
1. Remove the 4 screws with a hexagon screwdriver (HX5) to release the frame from the hinges.

2. The frame will now lift off as the actuator side is not connected.

3. Once the rooflights are removed from the upstands peel the tape from the bottom of the wooden frame to release moisture barrier. Tape the two neighbouring barriers together to keep water tight.



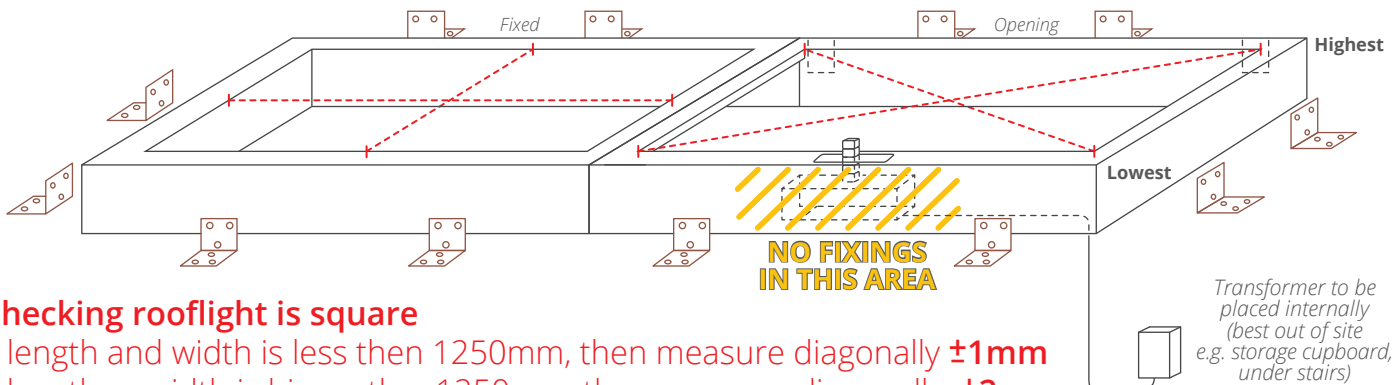
4. Apply white silicone on both sides of upstand as shown in above image.



5. Push modular upstands together.

6. Fix into place using 2 screws (on right hand side - female upstand)

Place the upstand over the opening and centralise. Make sure the upstands are square\* and that there is a pitch between 3 - 30 degrees. The hinge must be positioned at the highest point of the roof.

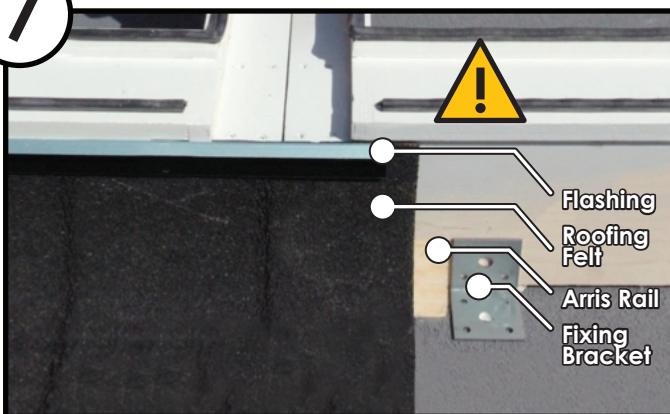


### Checking rooflight is square

If length and width is less than 1250mm, then measure diagonally  $\pm 1\text{mm}$   
If length or width is bigger than 1250mm, then measure diagonally  $\pm 2\text{mm}$

If the upstands are square and has the correct pitch you are ready to weather the upstand.

7



7. Fix upstand to roof with fixing brackets. Arris rail can now be fixed around bottom of the upstand. Roofing membrane can then be applied to upstand and flashing fitted.



Cut the roofing around the hinge.

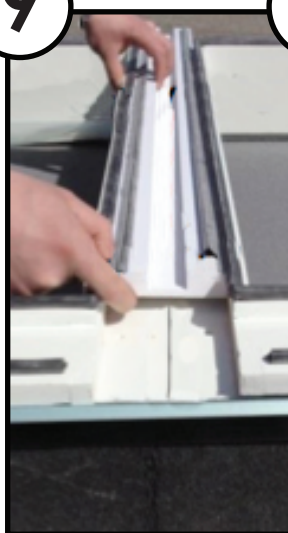


Direct heat away from gasjet when applying roof membrane!

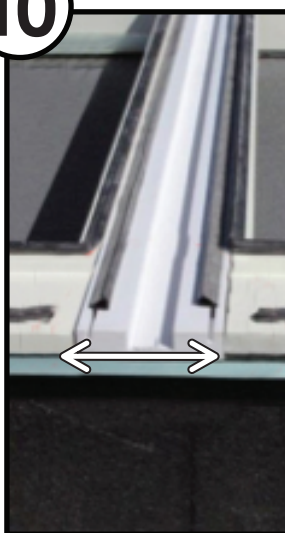
8



9



10



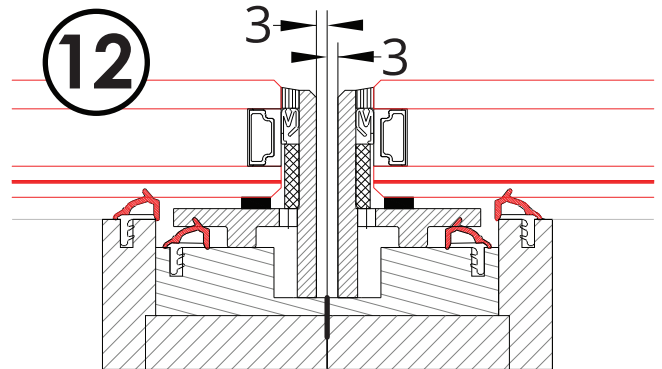
8. Apply a line of white silicone between joint of upstands. It is important not to use too much silicone as drain will not press down fully.
9. Slide drain into position whilst held above silicone. When in position press into place.
10. Apply a line of white silicone between flashing and drainage profile. (On both sides)





**11**

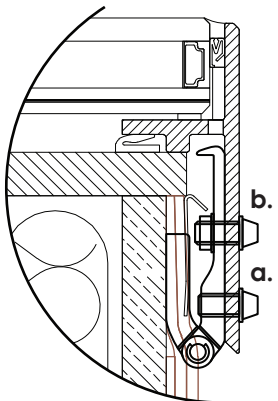
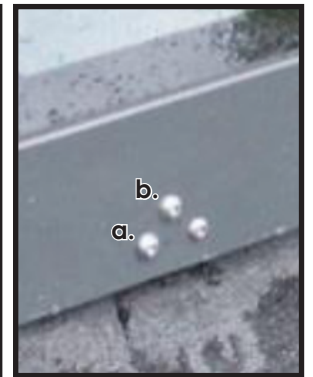
Lift rooflights onto the upstands.  
Use 6mm packer on both sides of rooflight to ensure the correct gap between frame.



**12**

### Center Point

**12.** Use center mark to check placement and that the rooflight is central.



**a.**



**b.**

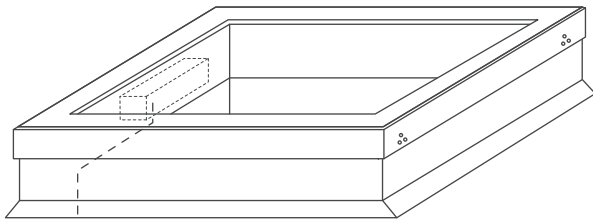
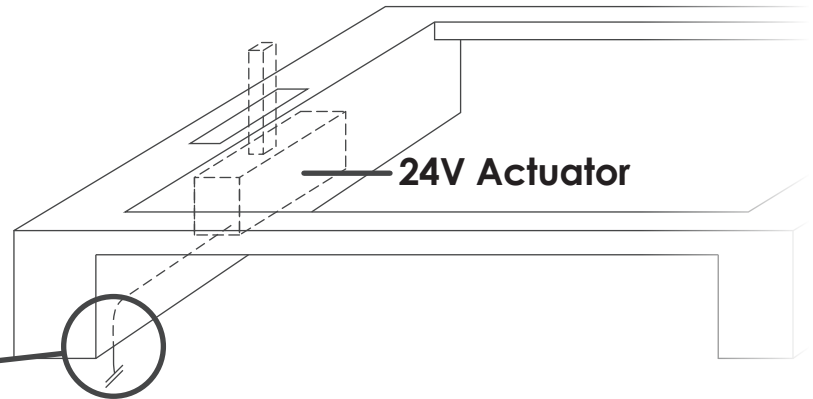


**For each hinge**

**a.** 2 of M8x16    **b.** 1 of M8x20

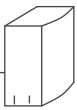
Align the lid to the hinges using the M8x16 screws from outside **(a)** on both hinges. Once bottom screws are tightened, insert M8x20 screw from outside **(b)**, manually open the rooflight and use M8 locking nut and washer from inside to fasten.

Actuator wire will come out from bottom left corner (seen from inside)



1.5mm x 2 core @ 1.3m (by EOS)

Wire from rooflight may need to be extended to allow for placement of transformer box. (by others)



**Transformer Box (by EOS)**  
180mm x 110mm x 70mm  
(B x H x D)



**24 V DC @ 1.2m**  
230 V UK Converter (by others)



**Control Keypad (by EOS)**  
81mm x 81mm x 12mm  
(B x H x D)

0.8mm x 4 core @ 6m (by EOS)



Mains

Switch

Actuator

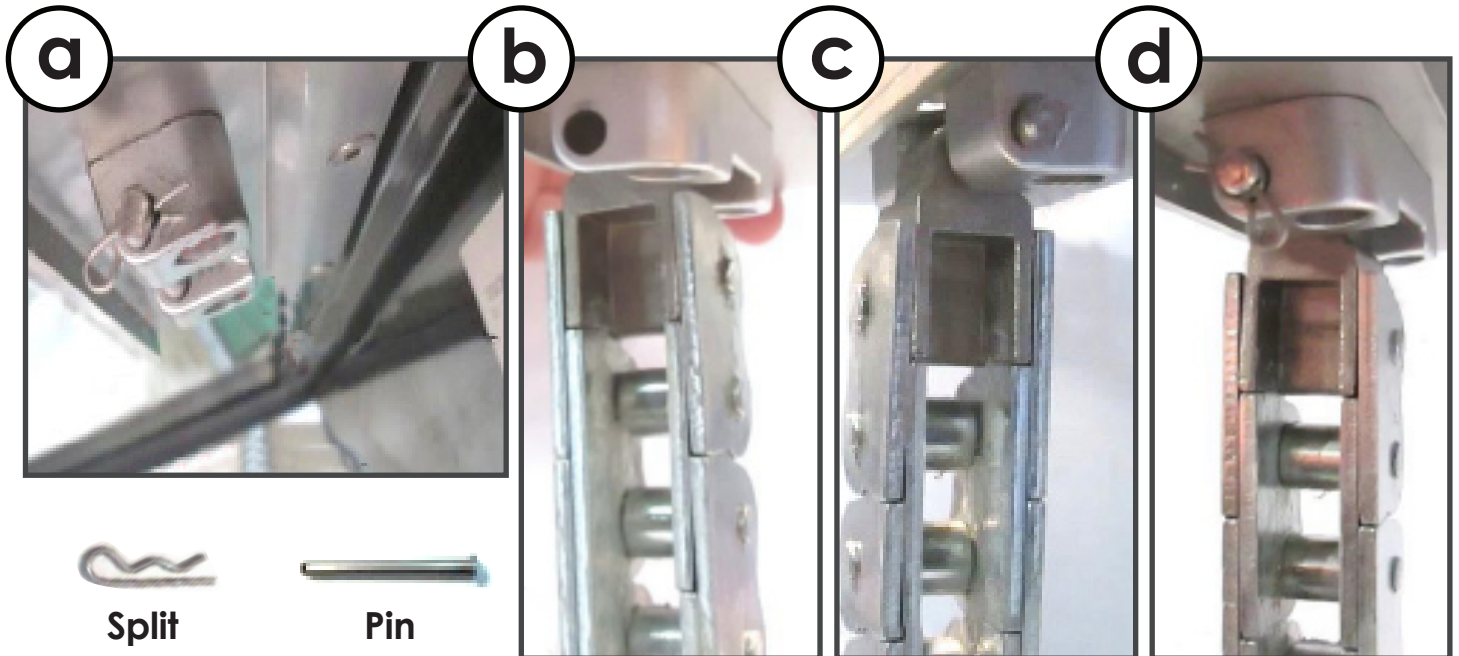
**13.** Commissioning should be carried out by a qualified electrician. (see wiring diagrams for more information).



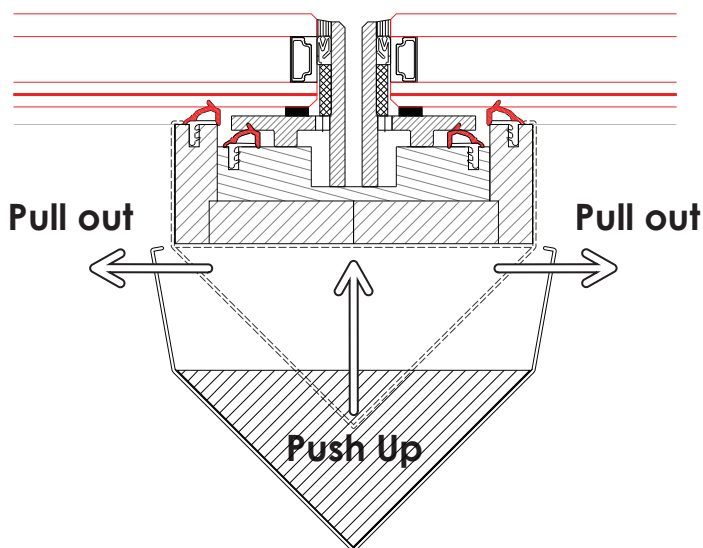
**DO NOT OPERATE UNTIL READING BELOW !**

**Engaging the actuator before reading the next page will damage rooflight.**

Once the rooflight is commissioned; manually open the lid of the rooflight and support to complete the below:



- a.** Remove split and pin from the chain bracket. **b.** Operate the actuator until the chain meets chain bracket. **c.** Insert pin through chain and bracket. **d.** Lock in place with split.



Internally the cover plate can now be fitted. Pull out legs of cover plate and it will slip onto the mid rail.

**Your rooflight is now fully installed!**

**If you have only have Fixed Units on your Modular system make sure to see the Fixed units installation manual.**